

Mes premières lettres

Cahier d'écriture cursive

Lucie Vandal



marceldidier

Sommaire

Message aux parents 4

Consignes 5

Préparation à l'écriture cursive... 6

La lettre i 8

La lettre j 9

La lettre r 10

La lettre n 11

La lettre m 12

La lettre o 13

La lettre a 14

La lettre u 15

La lettre y 16

La lettre c 17

La lettre d 18

La lettre q 19

La lettre g 20

La lettre p 21

La lettre l 22

La lettre t 23

La lettre b 24

La lettre h 25

La lettre k 26

La lettre f 27

La lettre e 28

La lettre s 29

La lettre v 30

La lettre w 31

La lettre x 32

La lettre z 33

**Exercices de reproduction
de mots et de textes**..... 34

**Pratique d'écriture:
la signature** 43

**Pratique d'écriture:
la liste des ami(e)s**..... 44

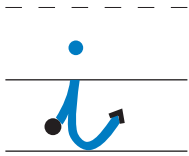
**Pratique d'écriture:
message à un(e) ami(e)** 45

Diplôme 47

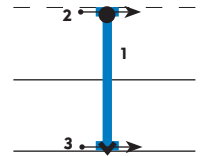
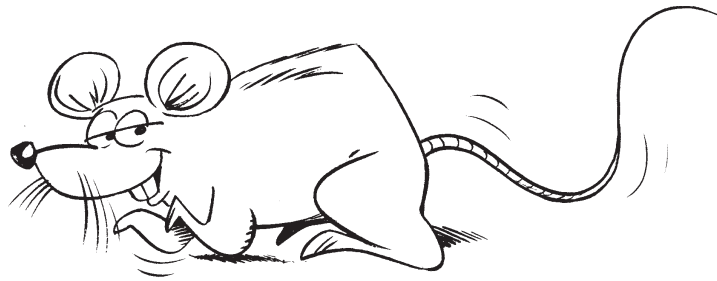
■ Exerce-toi à tracer ces motifs.

The image shows a handwriting practice grid with six rows. Each row contains a sequence of cursive motifs. The first few motifs in each row are colored blue, and the rest are light gray for tracing. Each row starts with a black dot on the left margin. The motifs are:

- Row 1: A series of connected cursive 'a' shapes.
- Row 2: A series of connected cursive 'o' shapes.
- Row 3: A series of connected cursive 'c' shapes.
- Row 4: A series of connected cursive 'j' shapes.
- Row 5: A series of connected cursive 'D' shapes.
- Row 6: A series of connected cursive 't' shapes.

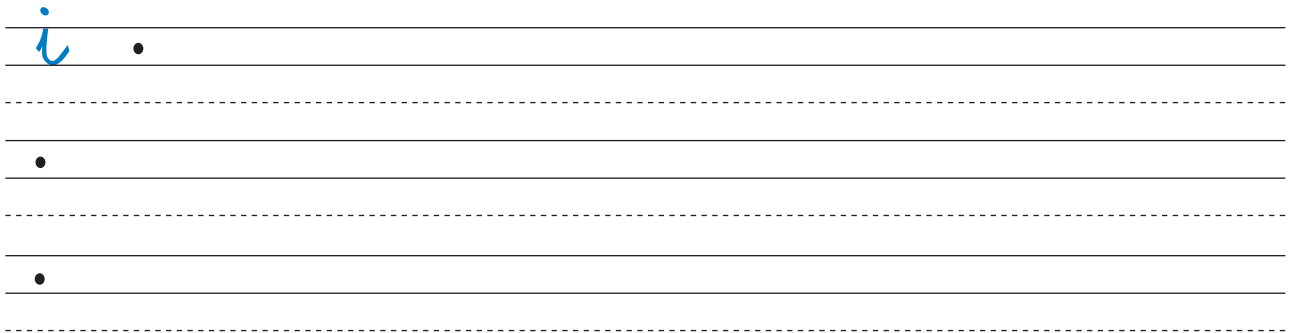
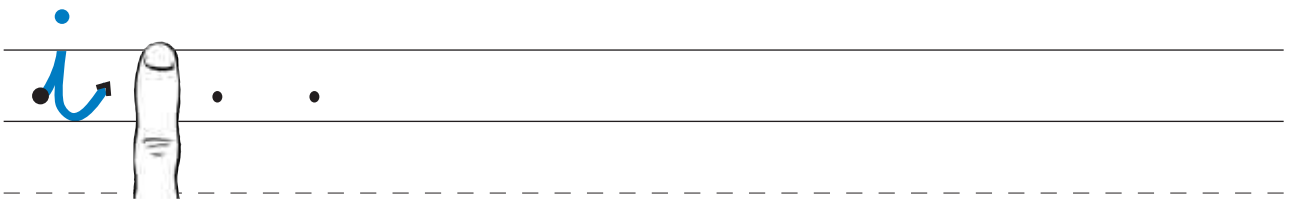


MINUSCULE

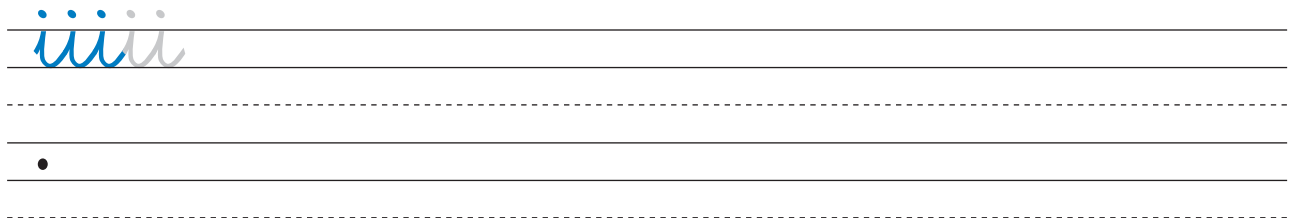


MAJUSCULE

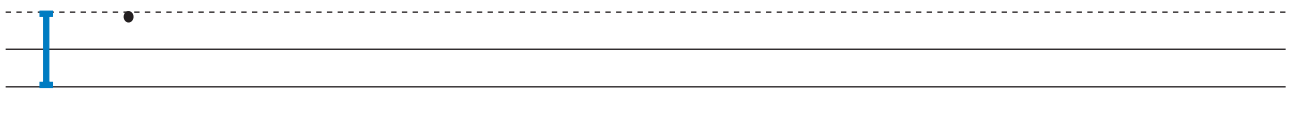
■ Trace la lettre *i*. Mets l'espace d'un doigt entre chaque lettre.



■ Attache les *i* ensemble.

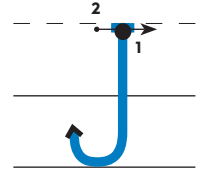


■ Trace le **I** majuscule.



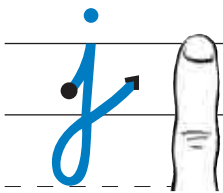


MINUSCULE

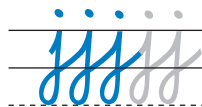


MAJUSCULE

■ Trace la lettre *j*.

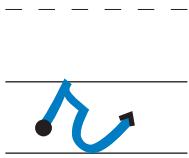


■ Attache les *j* ensemble.

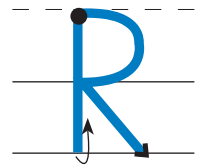
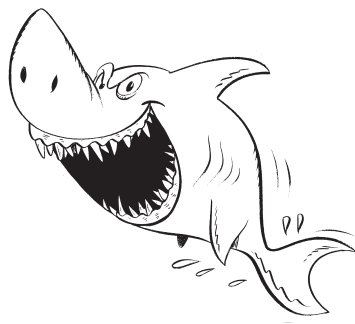


■ Trace le **J** majuscule.



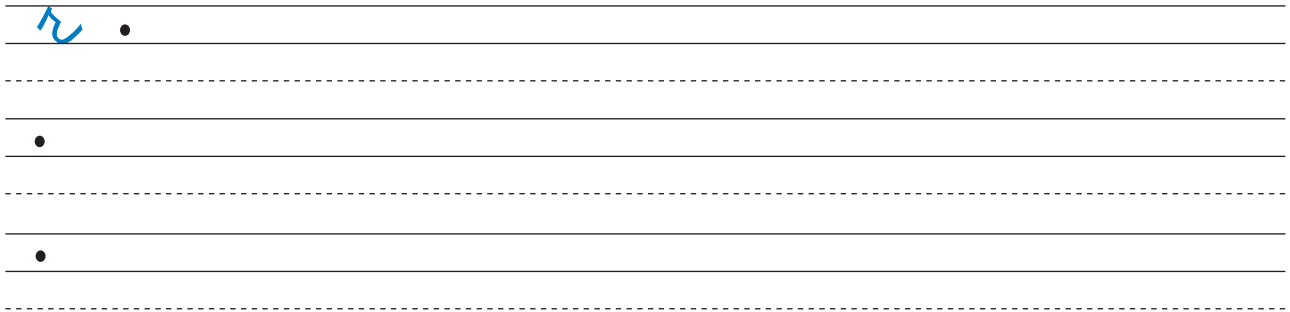
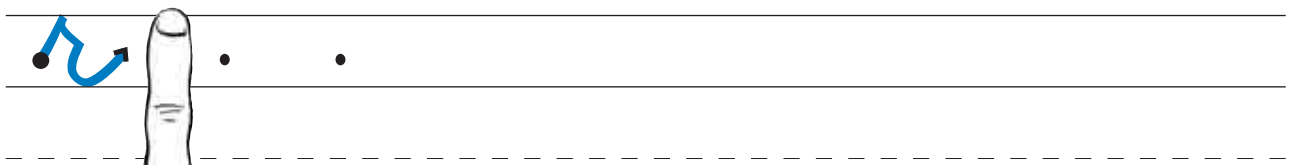


MINUSCULE

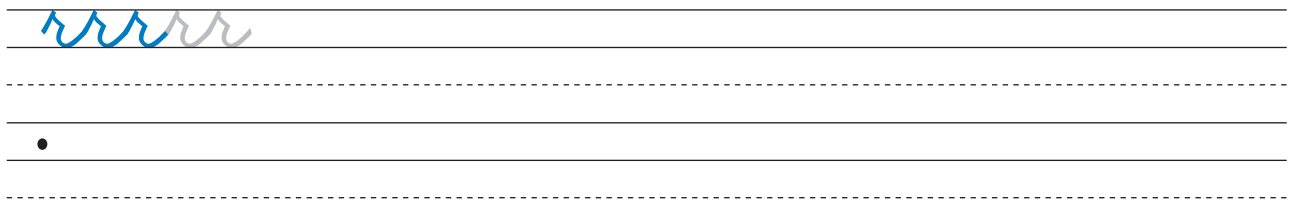


MAJUSCULE

■ Trace la lettre *r*.



■ Attache les *r* ensemble.



■ Trace le **R** majuscule.

